

## LIVE STREAMING LESSONS

Supporting students and their parents with remote learning is hugely important at the minute. While the technology is there to enable live streaming, don't forget to think about the safeguarding implications.

**Here are ten things to take into account before you incorporate live streaming into your remote lesson planning.**

1

Use an approved, school-registered account.

2

Will all students in your class be able to participate equally?

3

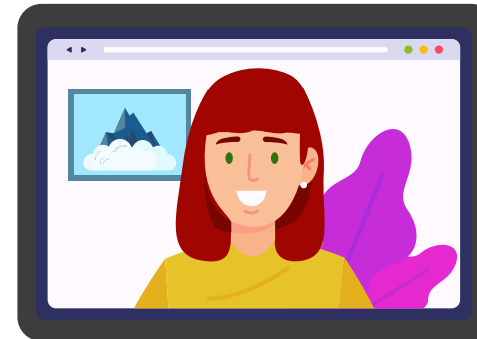
Do you need parental consent?

4

Test your streaming settings for privacy and access control.

5

Ensure you have an appropriate, safe and secure area to teach in.



6

Keep colleagues informed of your live stream schedule, have two of you on each lesson if possible.

7

Keep a written log of all live streams, be mindful you may be being recorded without your knowledge.

8

How can students communicate with you and their classmates during the session?

9

Ensure all participants are aware of the acceptable use and safeguarding policies and reporting processes.

10

Will live streaming improve the home teaching support you're giving?

*Talk to M-Tech for further advice on the live streaming options available.*